

## DBQ: The Industrial Revolution

*Historical Background:* The Industrial Revolution began in England in the mid 1700's and reached the United States by the end of the century. During this time, new technologies changed both the economic and cultural foundation of America. In Part A, read the five documents provided and answer the questions that follow each one. In Part B, use your analysis of the documents to answer the following question:

***How did the Industrial Revolution impact the lives of American factory***

### PART A

#### Document 1

The following is an excerpt from William Cooper's testimony before the Sadler Committee in 1832. The committee, led by Michael Sadler, investigated working conditions in factories and mills.

*Sadler:* What is your age?  
*Cooper:* I am eight and twenty.  
*Sadler:* When did you first begin to work in the mills?  
*Cooper:* When I was ten years of age.  
*Sadler:* What were your usual hours of working?  
*Cooper:* We began at five in the morning and stopped at nine in the night.  
*Sadler:* What time did you have for meals?  
*Cooper:* We had just one period of 40 minutes in the 16 hours. That was at noon.  
*Sadler:* What means were taken to keep you awake and attentive?  
*Cooper:* At times we were frequently strapped (whipped).  
*Sadler:* When your hours were so long, did you have time to attend school?  
*Cooper:* We had no time to go to school.  
*Sadler:* Can you read and write?  
*Cooper:* I can read, but I cannot write.

Describe work conditions in the factory based on the testimony.  
How did the Industrial Revolution affect children working in the mills?

#### Document 2

The following is an excerpt from the testimony of textile worker Joseph Hebergam to the Sadler Committee.

*Sadler:* What is the nature of your illness?  
*Hebergam:* I have damaged lungs. My leg muscles do not function properly and will not support the weight of my bones.  
*Sadler:* A doctor has told you that you will die within the year, is that correct?  
*Hebergam:* I have been so told.  
*Sadler:* Did he tell you the cause of your illness?  
*Hebergam:* He told me that it was caused by dust in the factories and from overwork and insufficient diet.  
*Sadler:* To what was your brother's death attributed?  
*Hebergam:* He was cut by a machine and died of infection.

How did factory conditions impact the health of some workers?

### Document 3

The following are testimonials from employees at the Wilson Mill in Bedford, Massachusetts.

**Elizabeth Bentley:**

“I worked from five in the morning till nine at night. I lived two miles from the mill. We had no clock. If I had been too late at the mill I would have been quartered. I mean that if I had been a quarter of an hour too late a half an hour would have been taken off. I only got a penny an hour and they would have taken a halfpenny.”

**Frank Forrest**

“In reality there were no regular, hours masters and managers did with us as they liked. The clocks in the factories were often put forward in the morning and back at night. Though this was known amongst the hands we were afraid to speak and a workman then was afraid to carry a watch.”

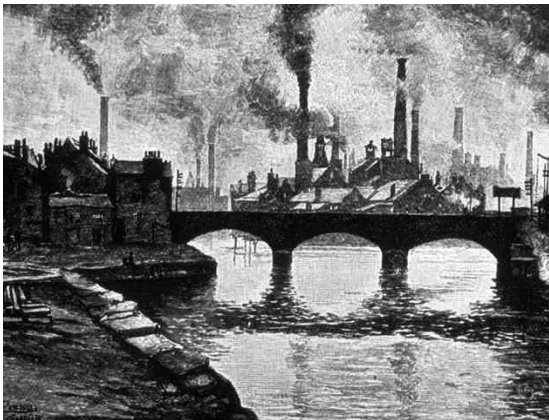
Why didn't factory workers complain about the way in which they were treated?

### Document 4



Based on the photograph above, describe the work conditions for factory employees.

### Document 5



*This illustration by an unknown artist depicts a factory town in New England in the late 1840's.*

What impact did the Industrial Revolution have on the environment?

### PART B

Use the information from the documents, your answers to the questions in Part A, and any previous knowledge of the topic, to write a well-organized answer to the question below. Be sure to refer to all five documents in your answer. The paper should be 1-2 pages in length.

**Question:** *How did the Industrial Revolution impact the lives of American factory workers?*